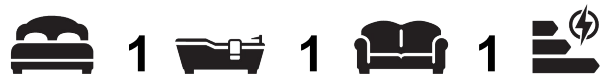




**306 Bowline House, Heron Wharf 5 Hemlock Street,  
London, E14 0XW**

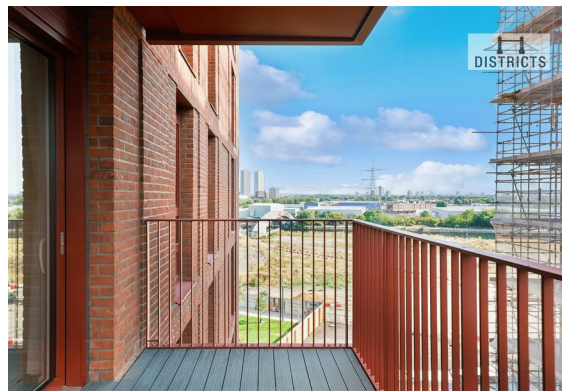
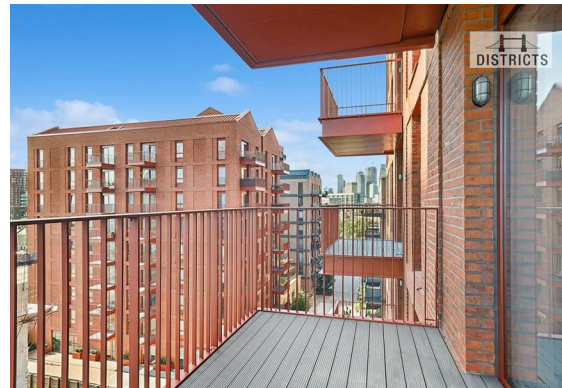
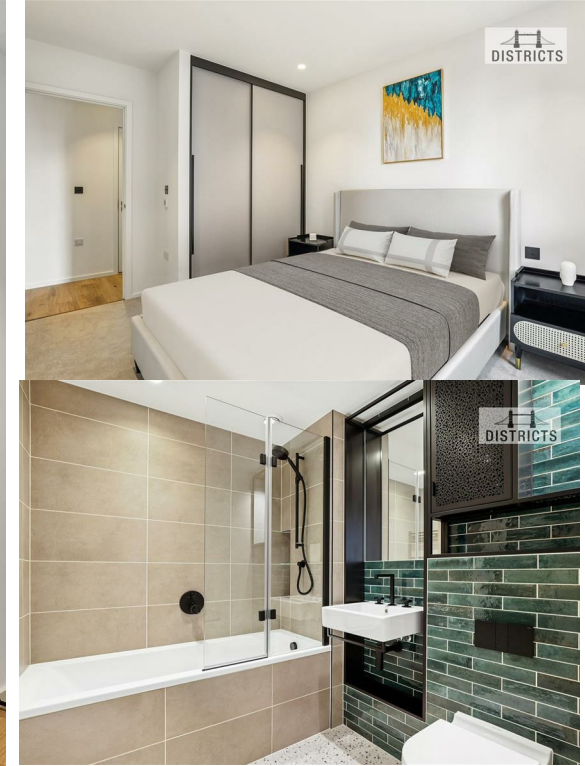


Stunning New one bedroom set within Bowline House, Heron Wharf Development. The property comprises, 541sq.ft of living space, modern open plan kitchen living area, luxury bathroom, great storage, double bedroom with built-in wardrobes, stylish furnishings and a large private balcony.

Council Tax Band: Tower Hamlets, D  
Minimum contract: 12 months  
Change of contract fee: £50 including VAT  
Lift access | Cladding: EWS1 Certificate available  
Holding Deposit - £460 (1 weeks rent, subject to agreed offer)

Electricity supply – Mains | Heating, Hot Water & Cooling – Mains | Water Supply & Sewerage – Mains | Lift Access | Cladding: EWS1 Cert. available

To check broadband and mobile phone coverage please visit Ofcom  
To check planning permission please visit Tower Hamlets Council Website, Planning & Building Control





DISTRICTS



DISTRICTS



DISTRICTS



DISTRICTS



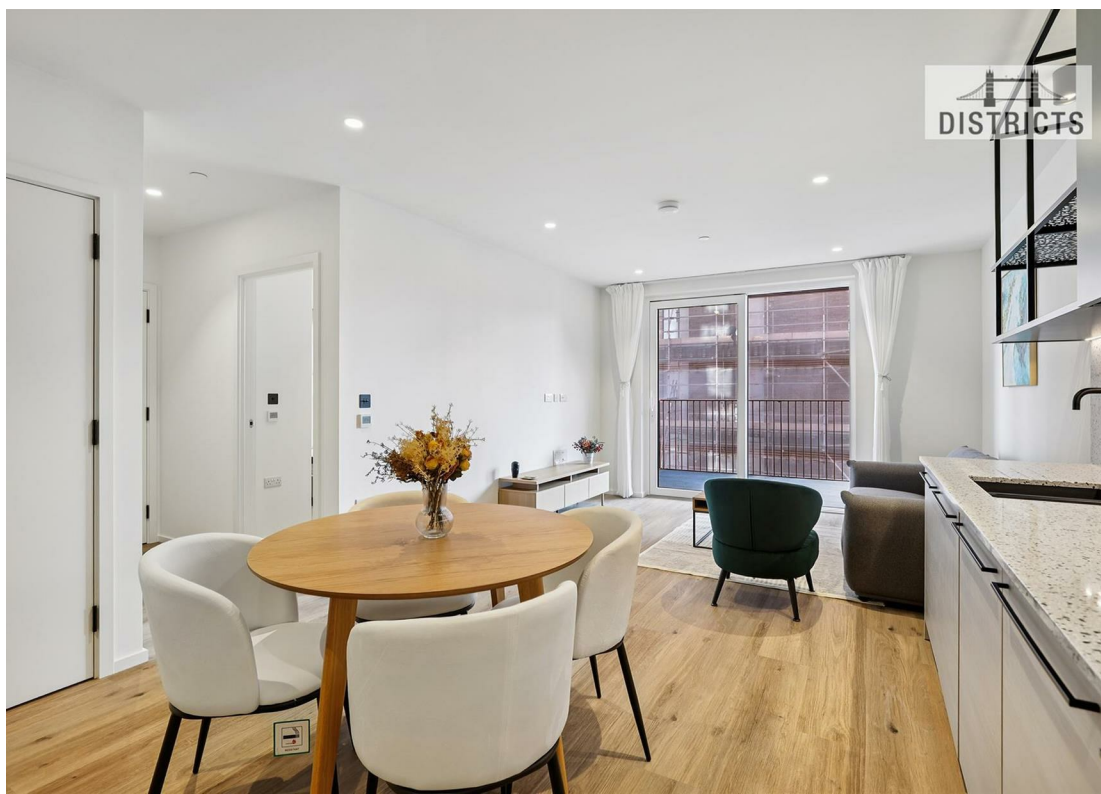
DISTRICTS



A VIBRANT NEW EAST LONDON NEIGHBOURHOOD



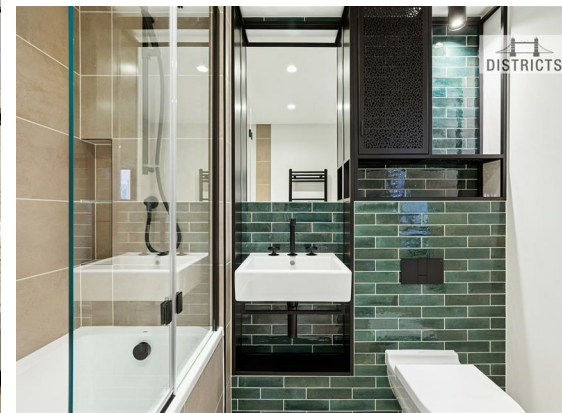
DISTRICTS



DISTRICTS



DISTRICTS



DISTRICTS



These particulars, whilst believed to be accurate are set out as a general outline only for guidance and do not constitute any part of an offer or contract. Intending purchasers should not rely on them as statements of representation of fact, but must satisfy themselves by inspection or otherwise as to their accuracy. No person in this firm's employment has the authority to make or give any representation or warranty in respect of the property.